



**Atlantis**



# CONTENTS

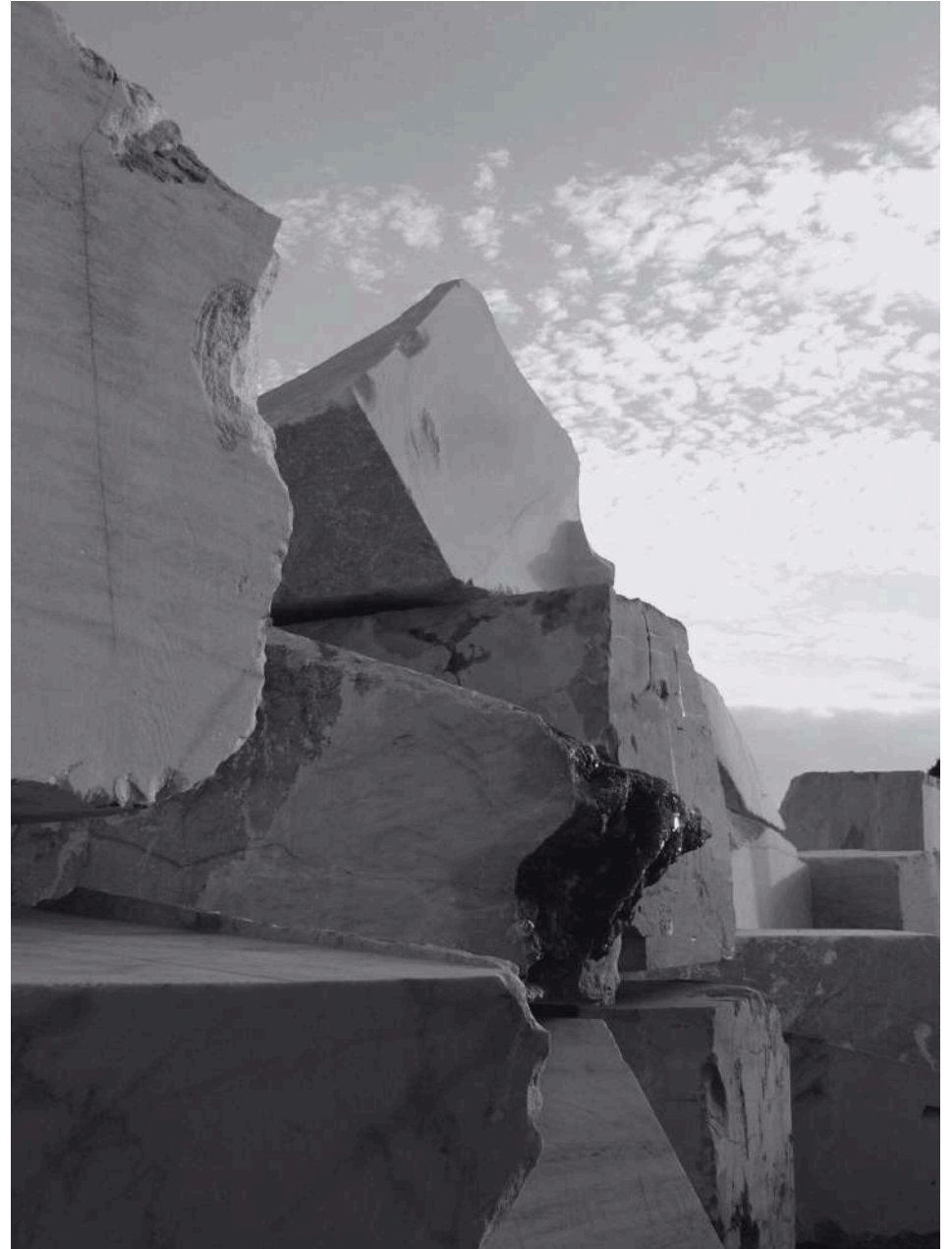
ABOUT US	03
OUR STORY	05
WHAT WE OFFER	07
PROJECT SHOWCASE	17
WHY US	31
CONTACT US	39

# ABOUT US

At Atlantis Architectural Solution, we are by your side to simplify the complexity of international building material trading. More than a supplier, we are your trusted partner for every stage of your project—offering top-quality materials, reliable technical support, and tailored consulting solutions.

Our mission is simple: help you realize your vision with precision, reliability, and trust. From initial planning to final execution, we provide a 360-degree service that covers logistics, delivery, and expert guidance.

Guided by a client-oriented and dynamic approach, we work closely with architects, contractors, and developers worldwide. By listening carefully and paying attention to every detail, we adapt to your needs and deliver added value at every step. Top materials. Tailored solutions. Complete support. That's the Atlantis promise.



# OUR STORY

Atlantis Architectural Solution was founded with one goal: to simplify the complexity of building material trading.

Guided by the belief that “every great vision deserves the right foundation,” we set out to become more than a trading company. We became a partner—listening, advising, and walking beside our clients from the very first sketch to the final detail. Over the years, we’ve built a reputation for precision, reliability, and trust. By constantly searching for the finest materials and coupling them with tailored services, we’ve helped bring to life projects that range from intimate residential spaces to large-scale developments.

Our story is still being written every day—in every slab we deliver, every partnership we nurture, and every vision we help turn into reality. Because at Atlantis, we don’t just supply materials. We simplify complexity and transform possibilities into achievements.



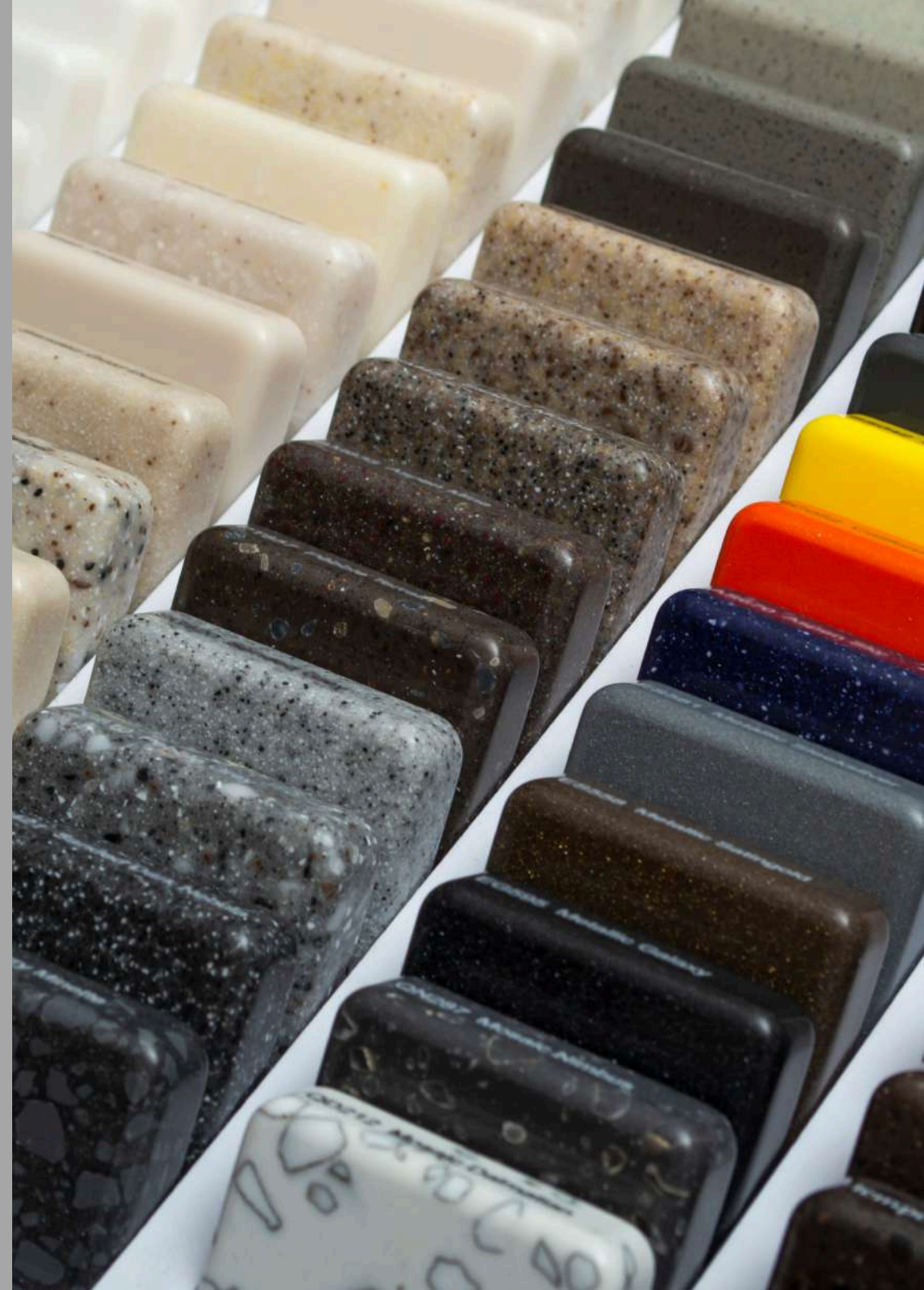
# Our Brand Partners



ATLANTIS

## WHAT WE OFFER

At Atlantis, we supply not only premium surfaces and bathroom products but also the complete set of solutions needed to execute projects with precision and durability.





## PORCELAIN TILES

High-performance tiles available in multiple sizes, thicknesses, and finishes—engineered for both interior and exterior applications.



## NATURAL STONE & LARGE-FORMAT SLABS

A carefully selected portfolio of stone and large-format porcelain slabs that combine strength, design flexibility, and long-term performance.





## BATHROOM COLLECTIONS

Premium bathroom products that balance refined aesthetics with advanced technical functionality, tailored for residential, hospitality, and commercial projects.



## FAÇADE SYSTEMS

We specialize in engineered ventilated façade and cladding solutions that elevate both performance and design.

## ATLANTIS

# PROJECT SHOWCASE

At Atlantis, every project is an opportunity to demonstrate the value of combining premium materials with technical expertise. From residential interiors to large-scale commercial developments, our work reflects a balance of design, precision, and performance.

This showcase highlights selected projects where we supplied porcelain tiles, natural stone, bathroom products, adhesives, and façade systems—delivering not only materials but also logistical support, cutting services, and engineered solutions that ensured each vision was realized to the highest standard.



# MAISON DADA



In Maison Dada's Kitchen, Patagonia Marble transforms the countertop and backsplash into natural canvases. Its bold veining and mineral inclusions create a rhythm of movement that energizes the intimate wood-clad environment.





# CIEL ET JARDIN



Ciel et Jardin is a residential tower of 33 floors located on plot 468 Achrafieh. Ciel et Jardin's facade is defined by a sophisticated interplay of glass, perforated metal panels, and warm terracotta-toned cladding, arranged in a rhythmic vertical pattern.

## OCIEL



The facade of Ociel Tower adopts an extruded porcelain ventilated system with concealed stainless steel clips fixed to a vertical aluminum substructure. The porcelain tiles are arranged in vertical bands, featuring a warm light-beige stone effect with a natural matte finish.





## LILAS RESIDENCE

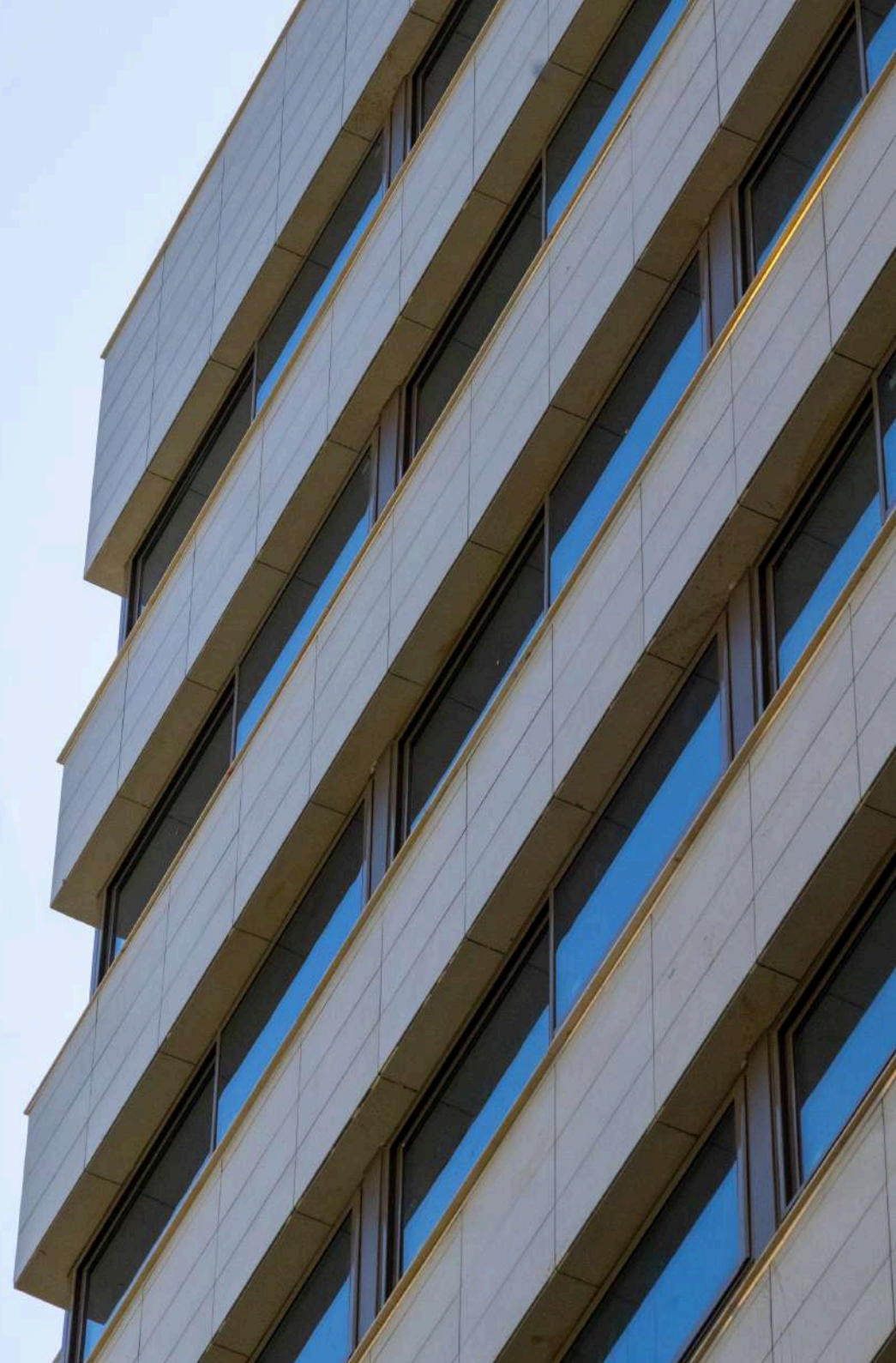


Lilas Residence, located in Lebanon Ras el Nabeh area, stands in the center of the Capital. The facade of Lilas Residence presents a dynamic architectural rhythm, combining terracotta-toned cladding with crisp aluminum framing and expansive glass surfaces. The alternating panels and recessed balconies add depth and movement across the elevation.

# N PROJECT



The facade of The N Project features a sleek and modular cladding system composed of large-format porcelain panels installed using a concealed mechanical fixing system. The clean vertical and horizontal lines are emphasized by the precise grid layout of the substructure, ensuring both visual order and technical performance.





## GARDEN CITY



The facade of the Garden City project is a refined combination of natural stone cladding and curtain wall glazing. Vertical surfaces are wrapped in light beige limestone panels, installed using a concealed mechanical fixing system that ensures durability and a clean, uninterrupted aesthetic.

# ATLANTIS WHY US

Choosing Atlantis Lebanon means working with a partner who delivers more than products — we provide complete, reliable support across every stage of a project.

- European Quality – premium surfaces, natural stone, and bathroom products sourced for their technical performance and refined design.
- Integrated Services – logistics, technical guidance, precision cutting, and finishing ensure seamless execution from concept to completion.
- Façade Expertise – engineered ventilated and cladding systems that combine aesthetics with structural reliability and energy efficiency.



# ATLANTIS

## WHY US

- Complete Systems – adhesives, grouts, and installation accessories supplied alongside surfaces, ensuring consistency and durability.
- Trusted Partnerships – proven track record of supporting architects, contractors, and developers with tailored solutions.
- Commitment to Excellence – a focus on quality, service, and reliability in every collaboration.

At Atlantis, we are not just suppliers — we are partners who stand with you throughout the building process, ensuring every detail is executed to the highest standard.







